

Activity 6 – Open Building Session

Imagine a circuit and try to build it!

Think of all the activities we've done so far. Is there a circuit that you didn't get to finish during an activity or that you'd like to try to rebuild? Is there a circuit you'd like to modify? Or is there something completely new you want to try to build?

By the end of the building session your group will:

- Present what you've built to the class
- Draw the circuit diagram on the board
- Explain how the circuit works

There are two new parts you can try out:

Light Sensitive Resistor (LSR)

The resistance of the LSR is proportional to how dark it is. More light will lower the resistance.

Red/Green (RG) LED

The RG LED is much like the RGB LED we saw before, but it only has two colours and they share a common (+) pin.

Image



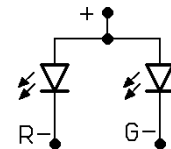
Circuit Diagram



Image



Circuit Diagram



Ideas, Questions, Notes